


**NATIONAL PRIMARY CARE INFECTIOUS DISEASES
SENTINEL SURVEILLANCE FORTNIGHTLY REPORT**

From The Australian Sentinel Practices Research Network (ASPREN) *

No. 09, 2024 - 22nd April — 5th May 2024


NATIONAL SUMMARY

 Influenza-like-illness levels remain steady above baseline levels

7 Case of influenza have been detected in this reporting period
6 x Influenza A
1 x Influenza B

7% Influenza positivity during the reporting period.

46 Cases of influenza have been detected this year:
39 x Influenza A
7 x Influenza B

 Gastroenteritis levels are increasing

**SYNDROMIC SURVEILLANCE
REPORTING**

Reports were received from 288 reporters from 8 states and territories during the reporting period. During weeks 17 and 18 reporters saw a total of 40,966 patients.

INFLUENZA-LIKE-ILLNESS (ILI)

Nationally, ILI notifications remained steady during the period with 190 notifications being reported in weeks 17–18. ILI rates reported in this period were 6 and 5 cases per 1000 consultations (weighted). This was similar to the previous fortnight where rates were 6 and 5 cases per 1000 consultations in weeks 15 and 16 respectively. For the same reporting period in 2023, ILI rates were lower at 3 and 4 cases per 1000 consultations for weeks 17 and 18 respectively (see Fig. 5).

GASTROENTERITIS

Nationally, gastroenteritis notifications decreased to 70 notifications reported. Gastroenteritis rates reported in this period slightly increased to 2 cases per 1000 consultations in weeks 17 and 18, compared to 2 and 1 cases per 1000 consultations in weeks 15 and 16 respectively (see Fig. 5).

* ASPREN is funded by the Commonwealth's Department of Health, Office of Health Protection, Vaccine Preventable Disease Surveillance Section.

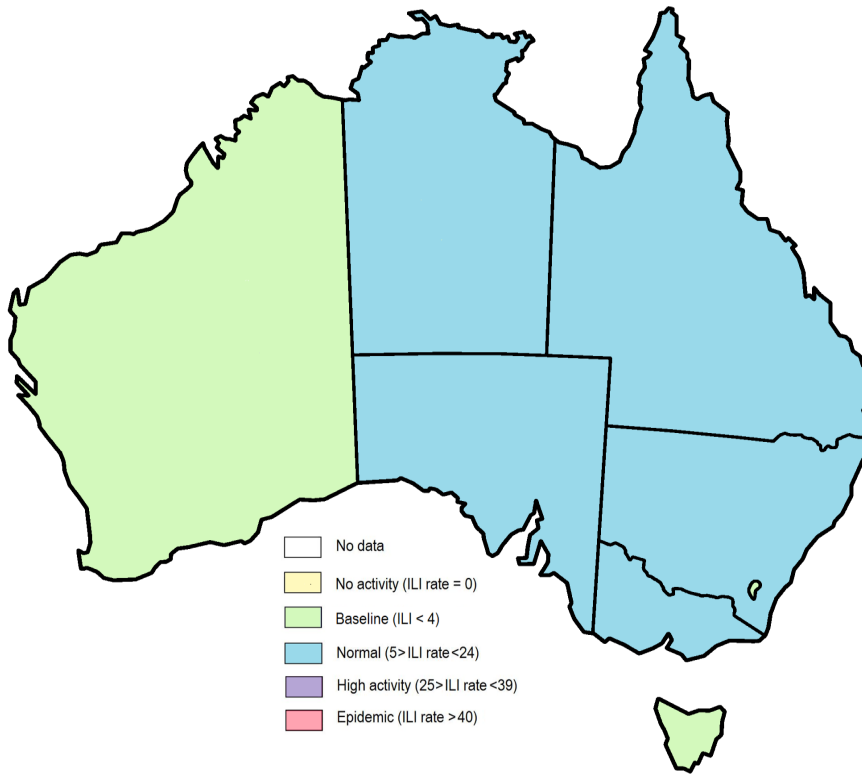


Figure 1. Map of ILI activity by jurisdiction, weeks 17 - 18, 2024.

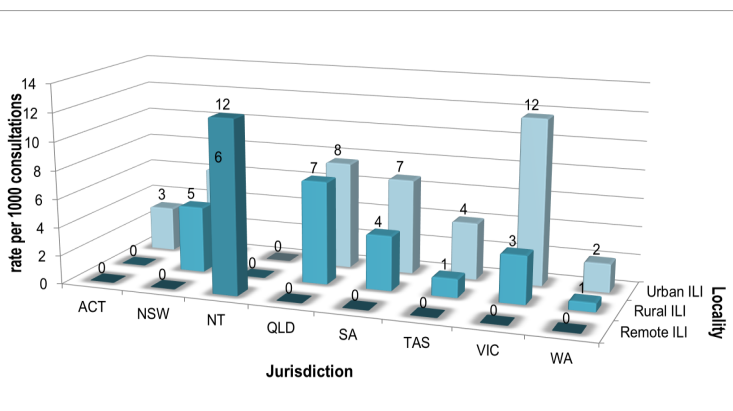


Figure 2. ASPREN rate of ILI by locality and jurisdiction, weeks 17 - 18, 2024.

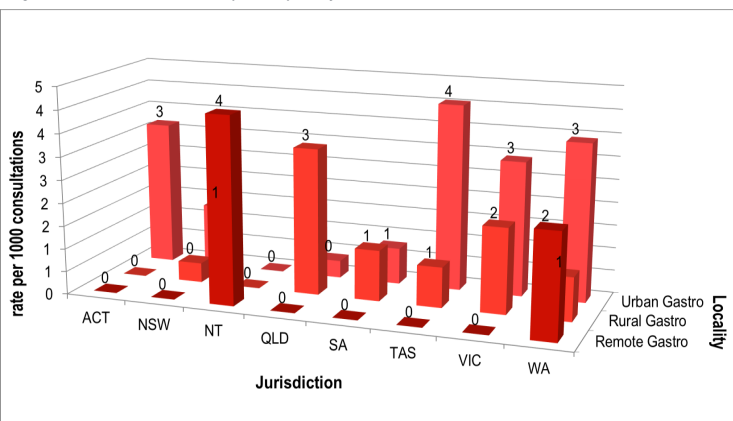


Figure 3. ASPREN rate of gastroenteritis by locality and jurisdiction, weeks 17 - 18, 2024.

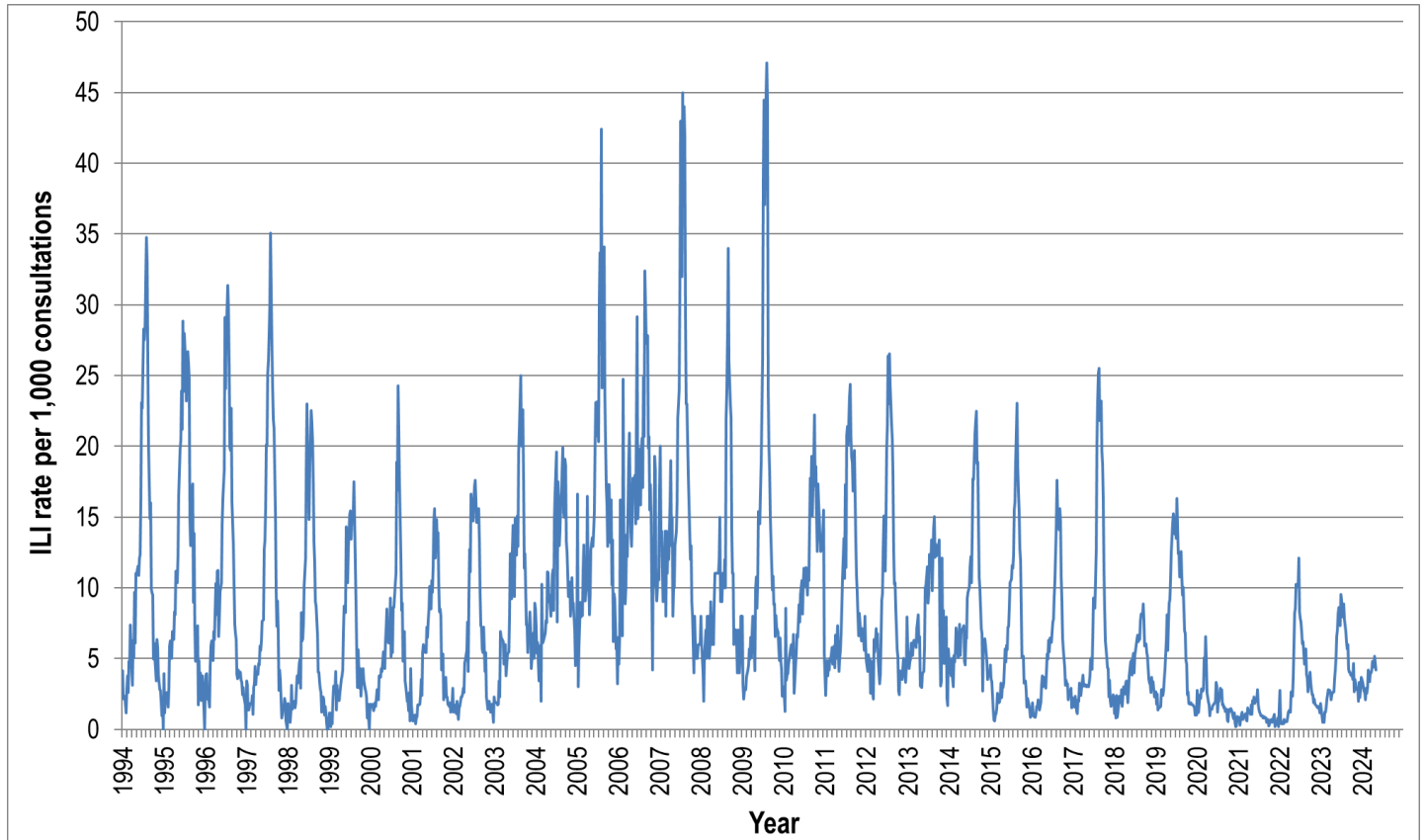


Figure 4. ASPREN ILI rates 1994 - 2024.

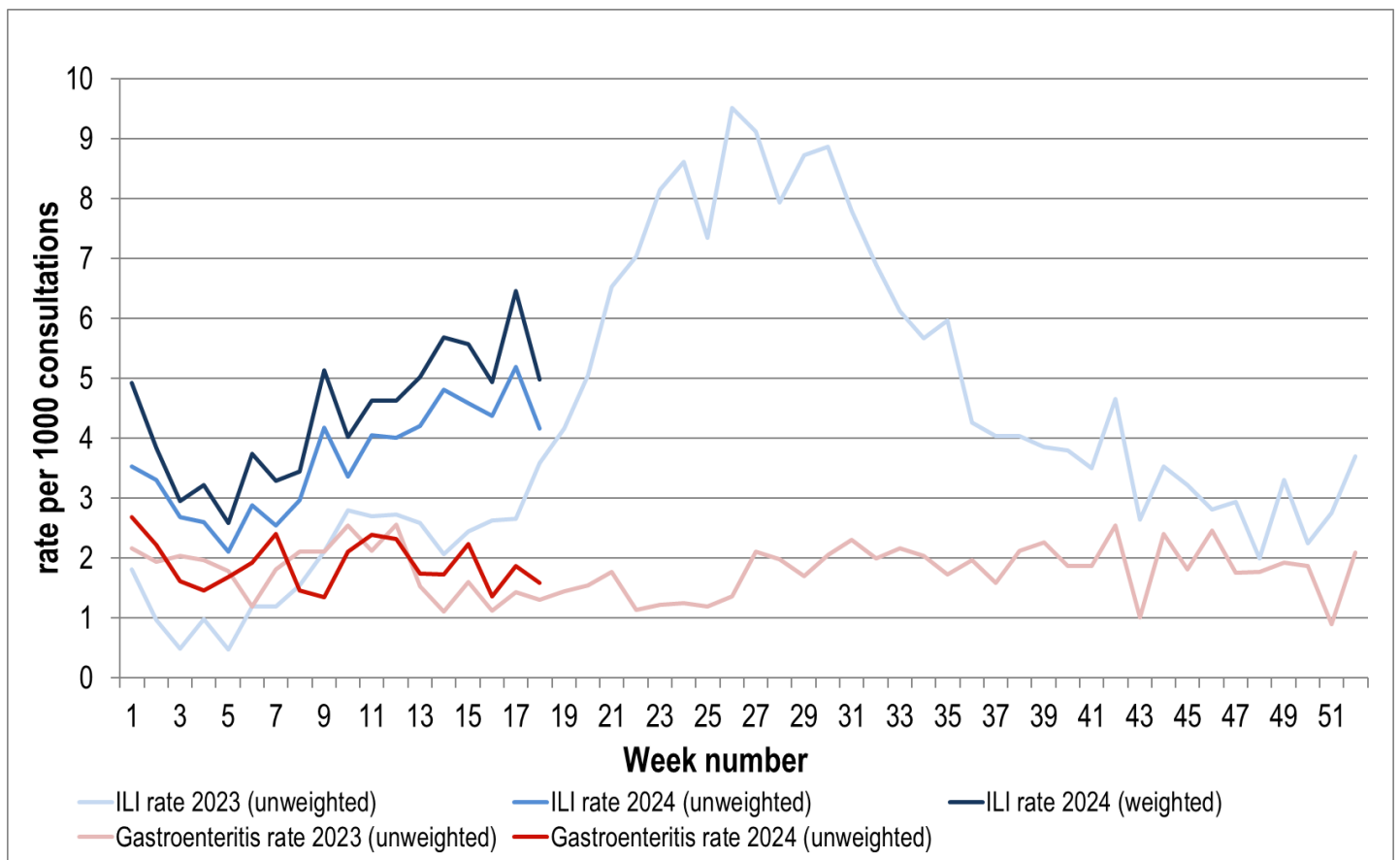


Figure 5. ASPREN ILI and gastroenteritis rates 2023-24. Weighted rates are weighted to account for population size differences between jurisdictions, using population estimates from the 2011 Australian Census.

VIROLOGICAL SURVEILLANCE

36% of all ILI patients were swab tested during weeks 17 and 18 (see Figure 6).

6 cases of Influenza A, 1 cases of Influenza B and 11 cases of SARS-CoV-2 were detected during this period. There were 18 cases of Rhinovirus detected making it the most common respiratory virus circulating the nation at present (see figure 8).

Viral laboratory data is provided by SA Pathology laboratory.

	Reporting Period 22 April - 5 May 2024	YTD 1 Jan - 5 May 2024
Total number of ILI notifications	190	1309
Number of swab tests performed	68	554
% ILI patients tested	36%	42%
% of swab tests positive for influenza	7%	8%

Figure 6. ASPREN virological surveillance results overview for 2024 #

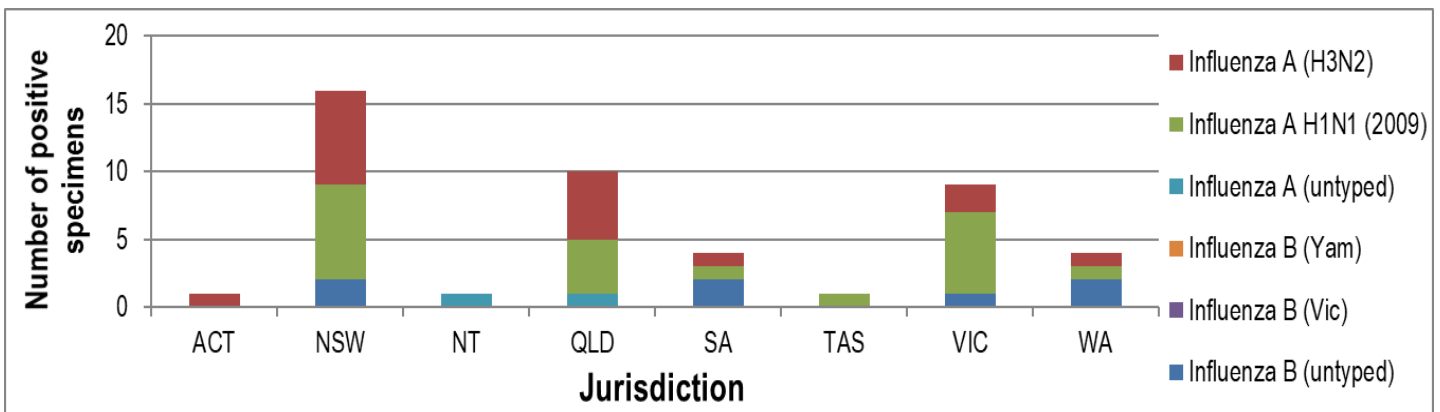


Figure 7. ASPREN influenza subtype analysis by jurisdiction for 2024 #

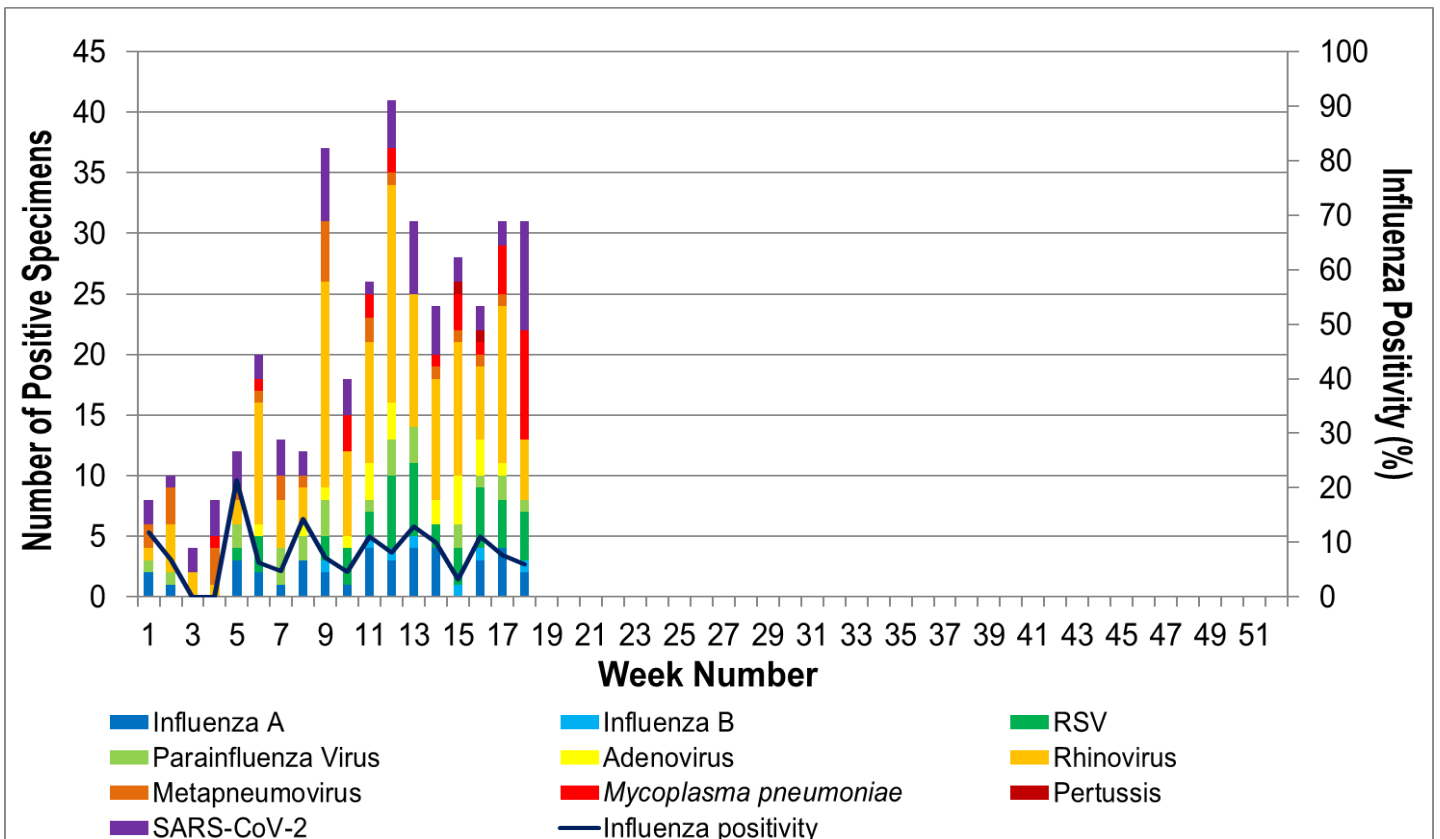


Figure 8. ASPREN, laboratory detection of influenza and other respiratory viruses for 2024 #

The Australian Sentinel Practices Research Network is supported by the Australian Government Department of Health (the Department). The opinions expressed in this paper are those of the authors, and do not necessarily represent the views of the Department.

Please note: This report is based on data available as at 9 May 2024. Delays in the reporting of data may cause data to change retrospectively.