

**NATIONAL PRIMARY CARE INFECTIOUS DISEASES  
SENTINEL SURVEILLANCE FORTNIGHTLY REPORT**

From The Australian Sentinel Practices Research Network (ASPREN) \*

No. 02, 2024 - 15th January — 28th January 2024

**NATIONAL SUMMARY**



Influenza-like-illness levels are decreasing

**0**

Case of influenza have been detected in this reporting period  
0 x Influenza A  
0 x Influenza B

**0%**

Influenza positivity during the reporting period.

**3**

Cases of influenza have been detected this year:  
3 x Influenza A  
0 x Influenza B



Gastroenteritis levels levels are decreasing

**SYNDROMIC SURVEILLANCE  
REPORTING**

Reports were received from 235 reporters from 8 states and territories during the reporting period. During weeks 3 and 4 reporters saw a total of 34,404 patients.

**INFLUENZA-LIKE-ILLNESS (ILI)**

Nationally, ILI notifications decreased during the period with 91 notifications being reported in weeks 3—4. ILI rates reported in this period were 3 cases per 1000 consultations (weighted). This was lower than the previous fortnight where rates were 5 and 4 cases per 1000 consultations in weeks 1 and 2 respectively. For the same reporting period in 2023, ILI rates were lower at 1 cases per 1000 consultations for weeks 3 and 4 (see Fig. 5).

**GASTROENTERITIS**

Nationally, gastroenteritis notifications significantly decreased to 53 notifications reported. Gastroenteritis rates reported in this period decreased to 2 and 1 cases per 1000 consultations in weeks 3 and 4 respectively, compared to 3 and 2 cases per 1000 consultations in weeks 1 and 2 respectively (see Fig. 5).

\* ASPREN is funded by the Commonwealth's Department of Health, Office of Health Protection, Vaccine Preventable Disease Surveillance Section.

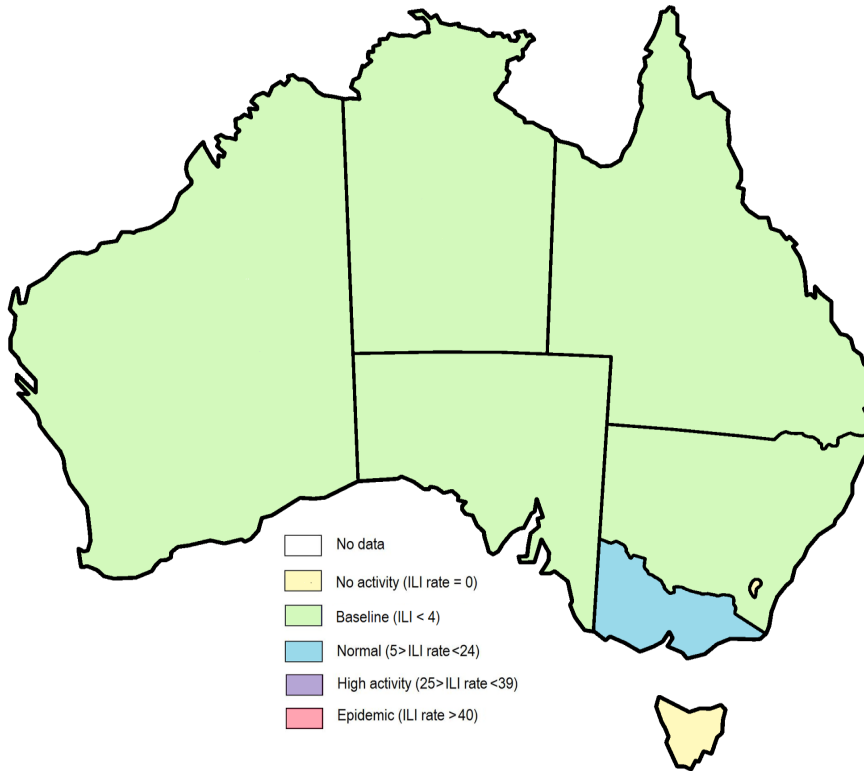


Figure 1. Map of ILI activity by jurisdiction, weeks 03 - 04, 2024.

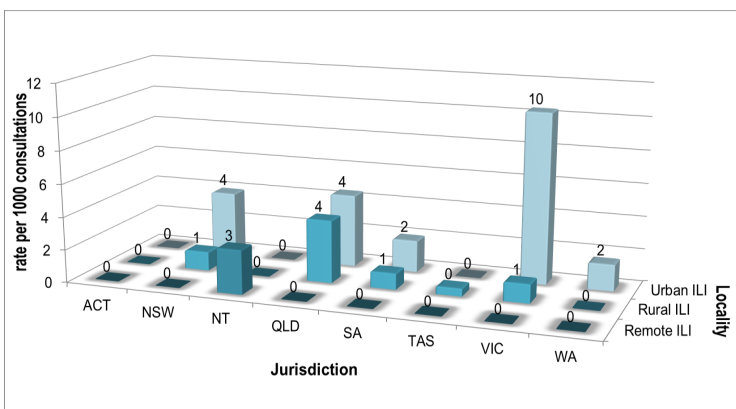


Figure 2. ASPREN rate of ILI by locality and jurisdiction, weeks 03 - 04, 2024.

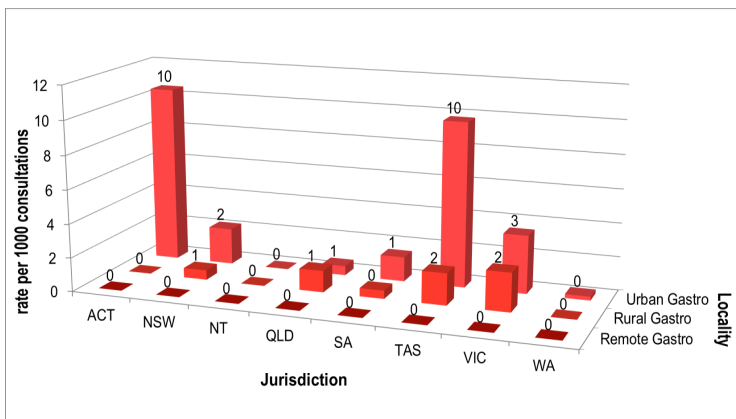


Figure 3. ASPREN rate of gastroenteritis by locality and jurisdiction, weeks 03 - 04, 2024.

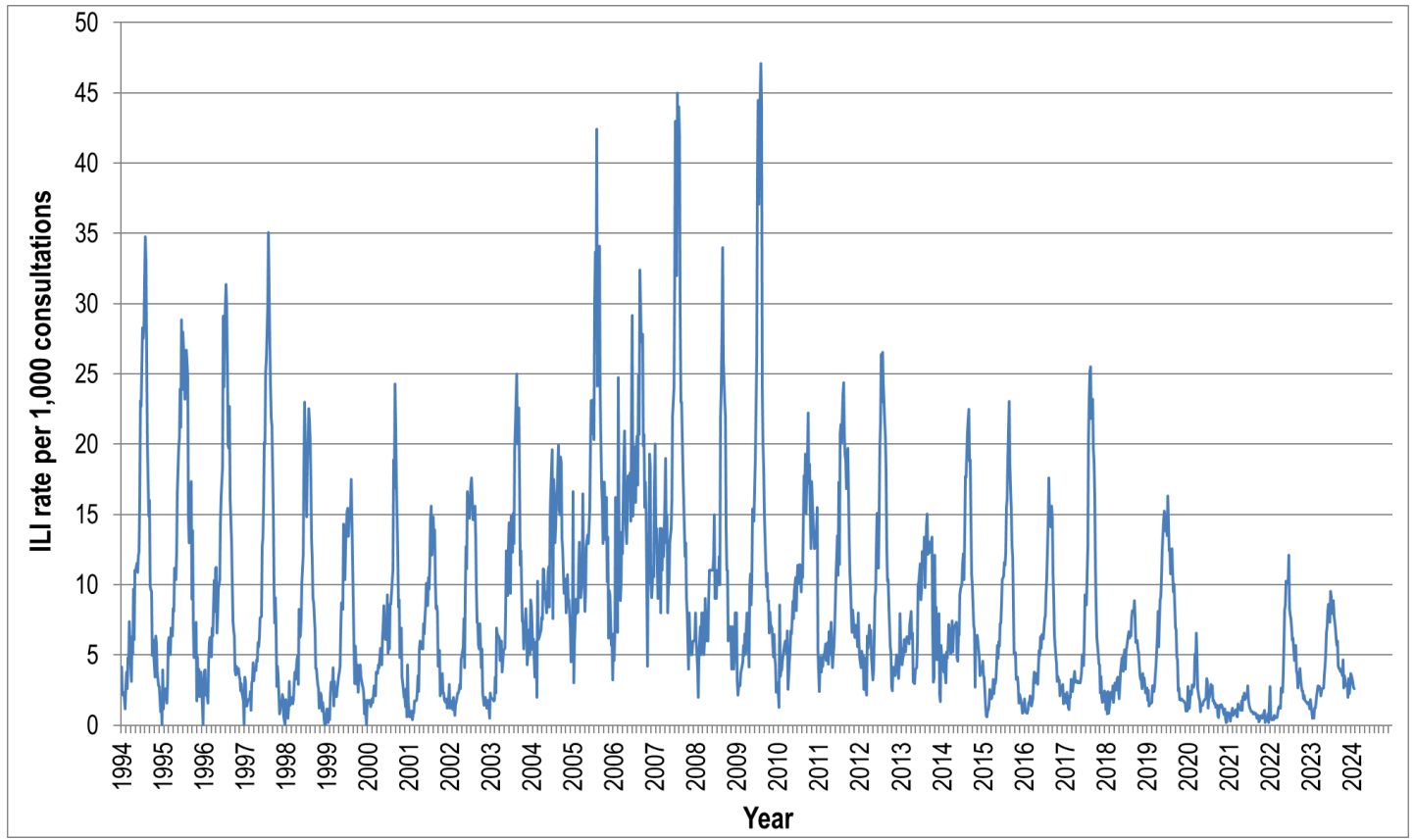


Figure 4. ASPREN ILI rates 1994 - 2024.

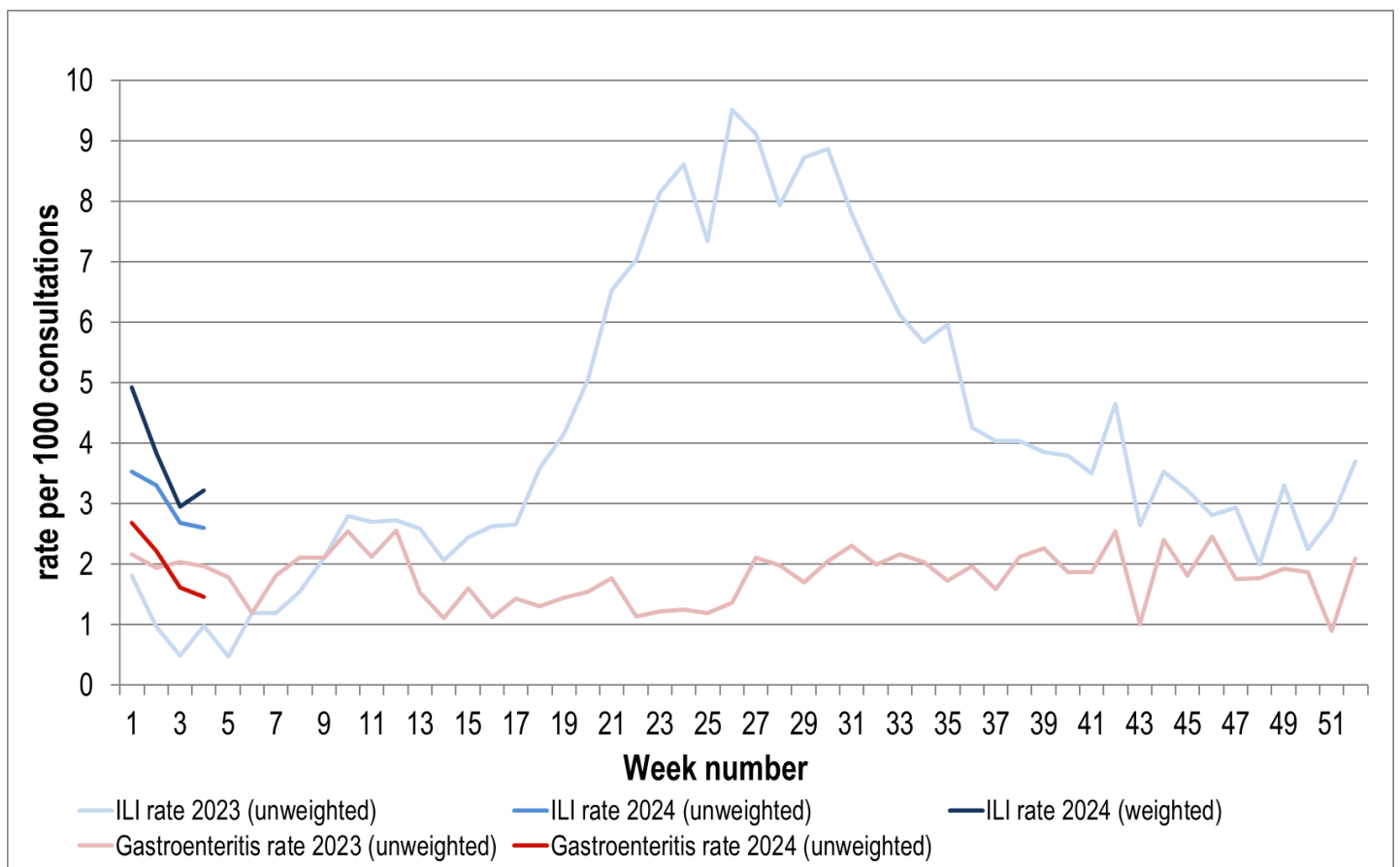


Figure 5. ASPREN ILI and gastroenteritis rates 2023-24.

Weighted rates are weighted to account for population size differences between jurisdictions, using population estimates from the 2011 Australian Census.

**VIROLOGICAL SURVEILLANCE**

27% of all ILI patients were swab tested during weeks 3 and 4 (see Figure 6).

No cases of Influenza and 5 cases of SARS-CoV-2 were detected during this period.

There were 3 cases of Metapneumovirus detected making it the second most common respiratory virus circulating the nation at present (see figure 8).

# Viral laboratory data is provided by SA Pathology laboratory.

	Reporting Period	YTD
	15 Jan - 28 Jan 2024	1 Jan - 28 Jan 2024
Total number of ILI notifications	91	202
Number of swab tests performed	25	55
% ILI patients tested	27%	27%
% of swab tests positive for influenza	0%	5%

Figure 6. ASPREN virological surveillance results overview for 2024 #

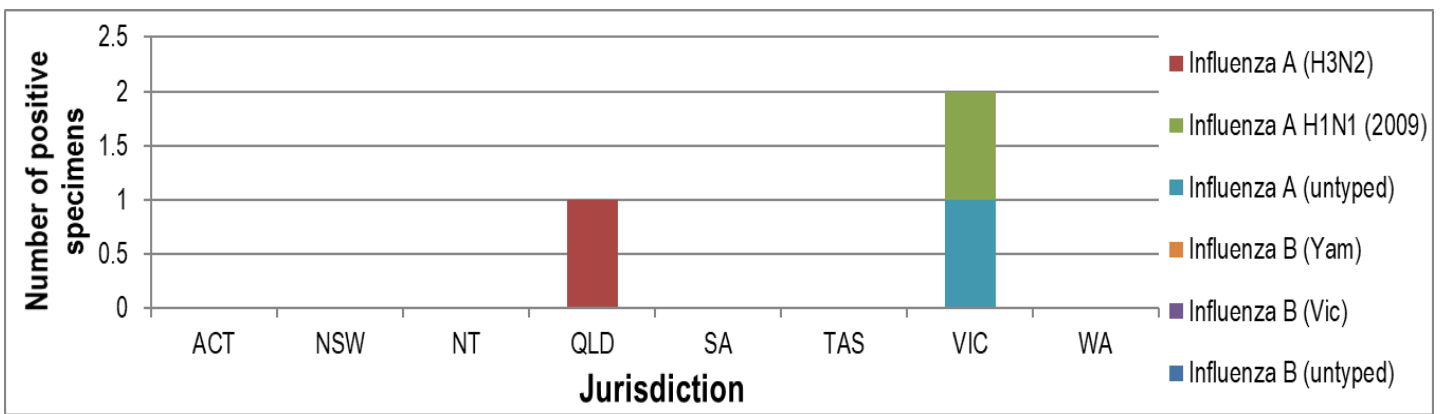


Figure 7. ASPREN influenza subtype analysis by jurisdiction for 2024 #

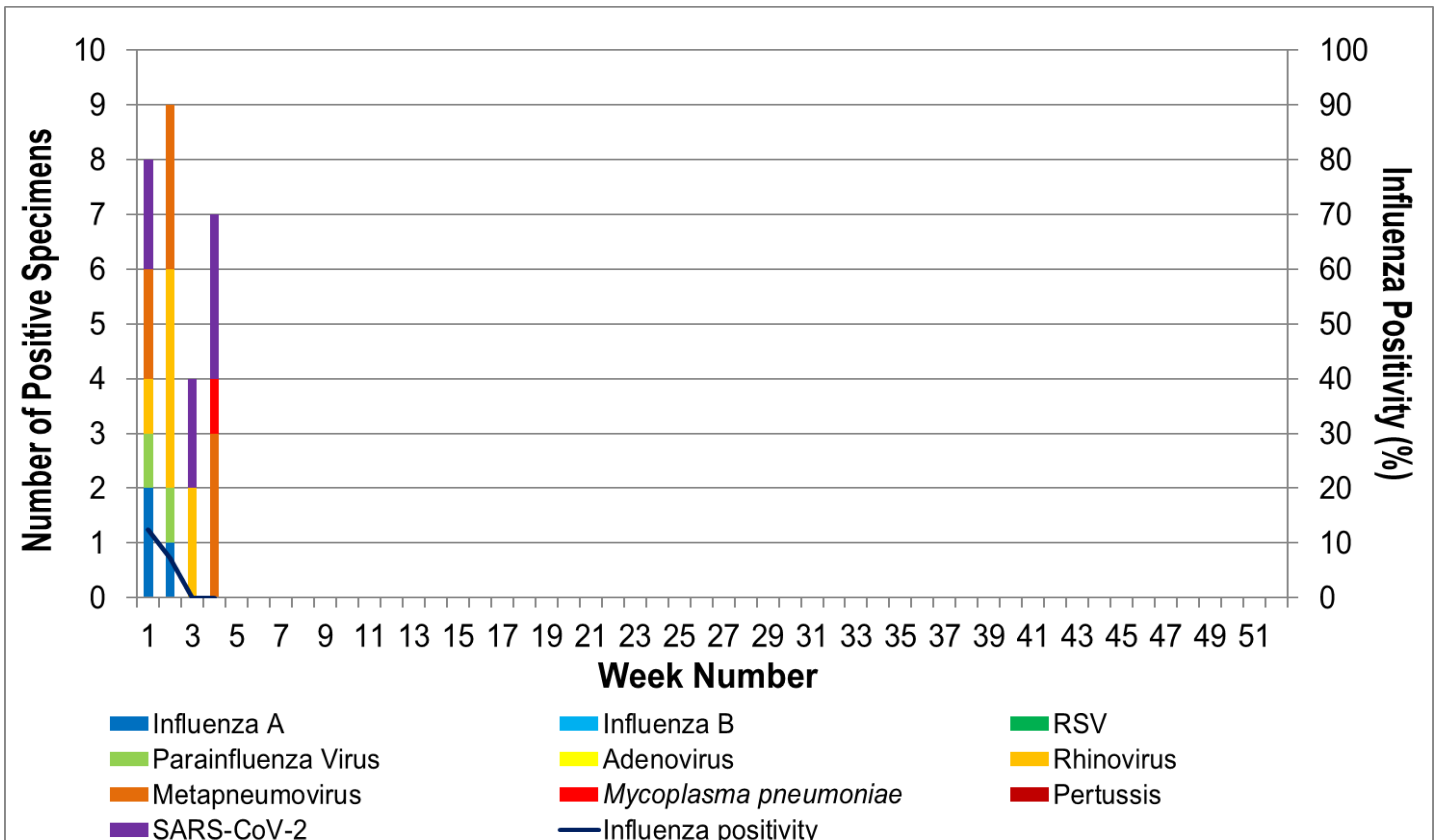


Figure 8. ASPREN, laboratory detection of influenza and other respiratory viruses for 2024 #

The Australian Sentinel Practices Research Network is supported by the Australian Government Department of Health (the Department). The opinions expressed in this paper are those of the authors, and do not necessarily represent the views of the Department.

Please note: This report is based on data available as at 1 February 2024. Delays in the reporting of data may cause data to change retrospectively.