

**NATIONAL PRIMARY CARE INFECTIOUS DISEASES
SENTINEL SURVEILLANCE FORTNIGHTLY REPORT**

Combining data from The Australian Sentinel Practices Research Network (ASPREN)*
and the Victorian Sentinel Practitioners Influenza Network (VicSPIN)*

No. 14, 2022 - 4th July — 17th July 2022

NATIONAL SUMMARY



Influenza-like-illness levels are decreasing

11

Cases of influenza have been detected in this reporting period
24 x Influenza A
0 x Influenza B

28%

Influenza positivity during the reporting period.

150

Cases of influenza have been detected this year:
150 x Influenza A
0 x Influenza B



Gastroenteritis levels remain steady below baseline levels

**SYNDROMIC SURVEILLANCE
REPORTING**

Reports were received from 211 reporters from 8 states and territories during the reporting period. During weeks 27 and 28 reporters saw a total of 31,684 patients.

INFLUENZA-LIKE-ILLNESS (ILI)

Nationally, ILI notifications significantly decreased during the period with 253 notifications being reported in weeks 27–28. ILI rates reported in this period were 8 cases per 1000 consultations (weighted). This was lower than the previous fortnight where rates were 14 and 9 cases per 1000 consultations in weeks 25 and 26 respectively. For the same reporting period in 2021, ILI rates were significantly lower at 2 and 1 cases per 1000 consultations for weeks 27 and 28 respectively (see Fig. 5).

GASTROENTERITIS

Nationally, gastroenteritis notifications were similar at 49 notifications reported. Gastroenteritis rates reported in this period remained steady at 2 cases per 1000 consultations in weeks 27 and 28, compared to 2 cases per 1000 consultations in weeks 25 and 26 (see Fig. 5).

* ASPREN is funded by the Commonwealth's Department of Health, Office of Health Protection, Vaccine Preventable Disease Surveillance Section.

* VicSPIN is funded by Melbourne Health and the Victorian Infectious Diseases Reference Laboratory.

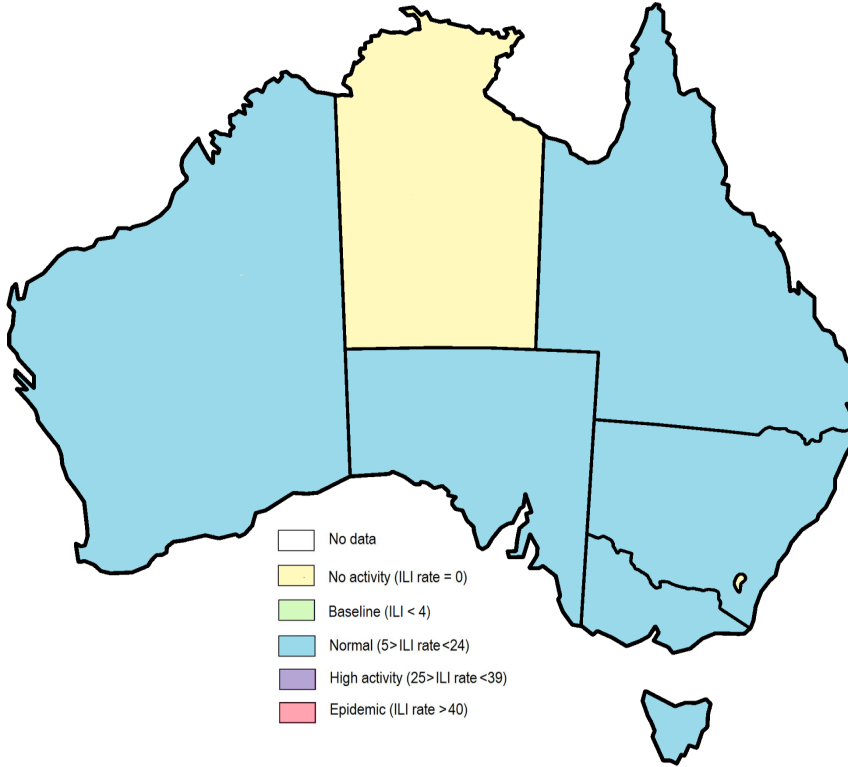


Figure 1. Map of ILI activity by jurisdiction, weeks 27 - 28, 2022.

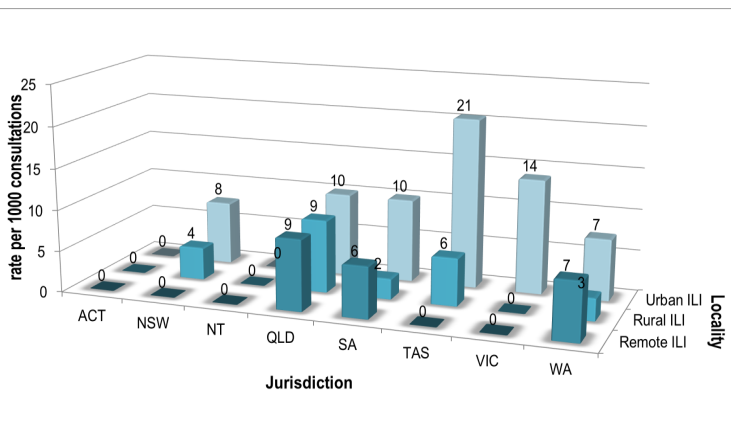


Figure 2. ASPREN rate of ILI by locality and jurisdiction, weeks 27 - 28, 2022.

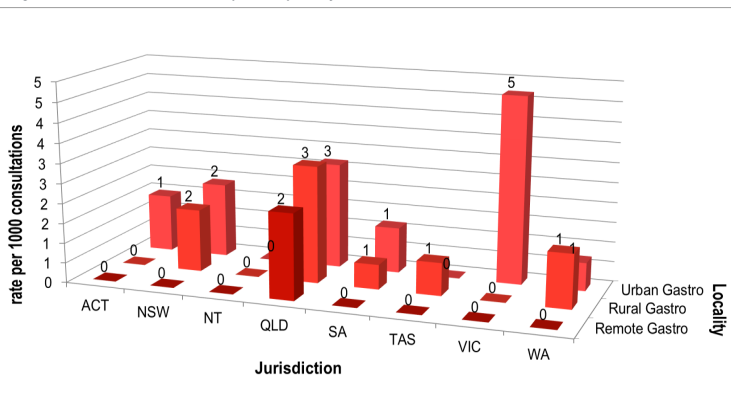


Figure 3. ASPREN rate of gastroenteritis by locality and jurisdiction, weeks 27 - 28, 2022.

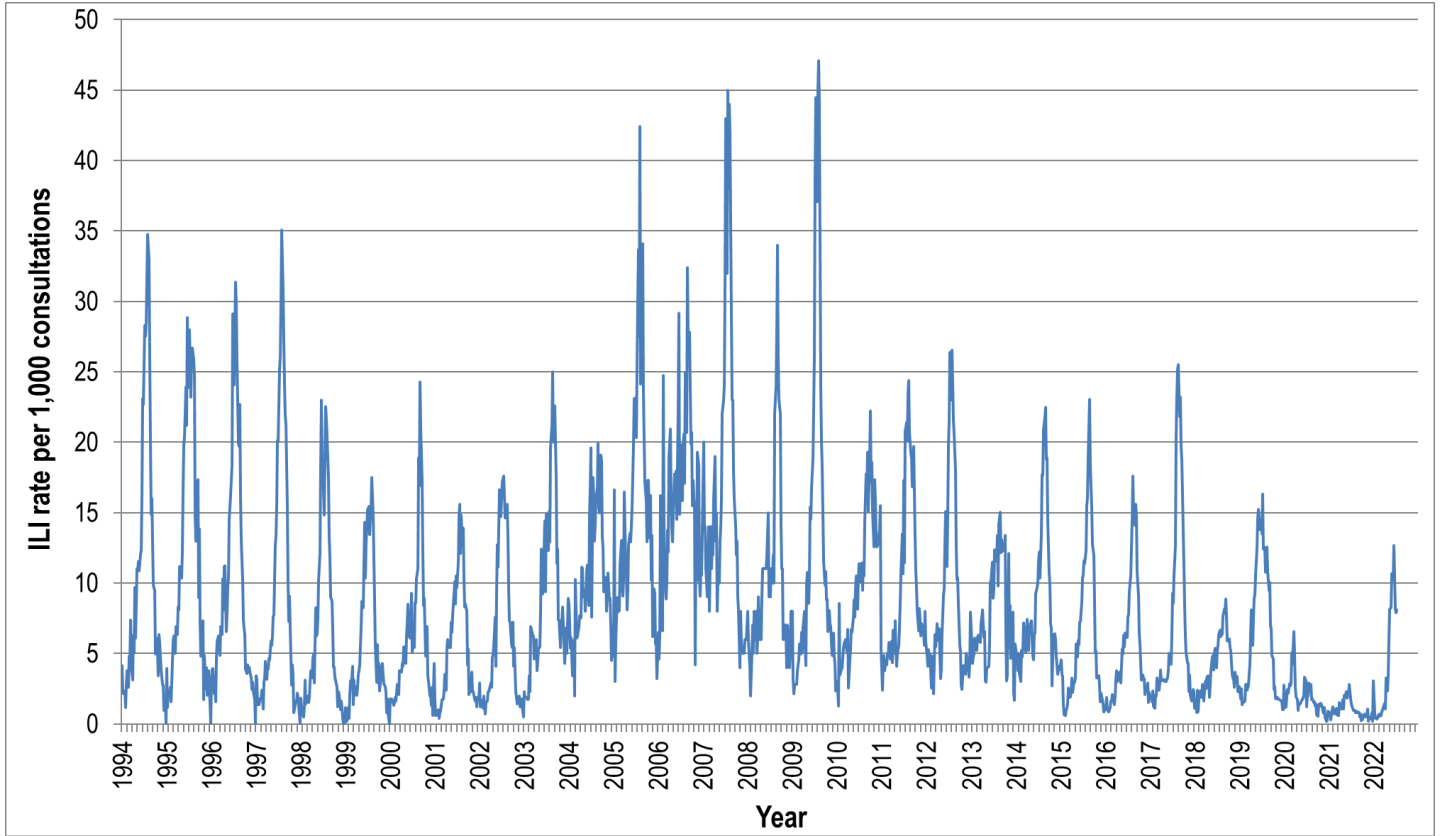


Figure 4. ASPREN ILI rates 1994 - 2022.

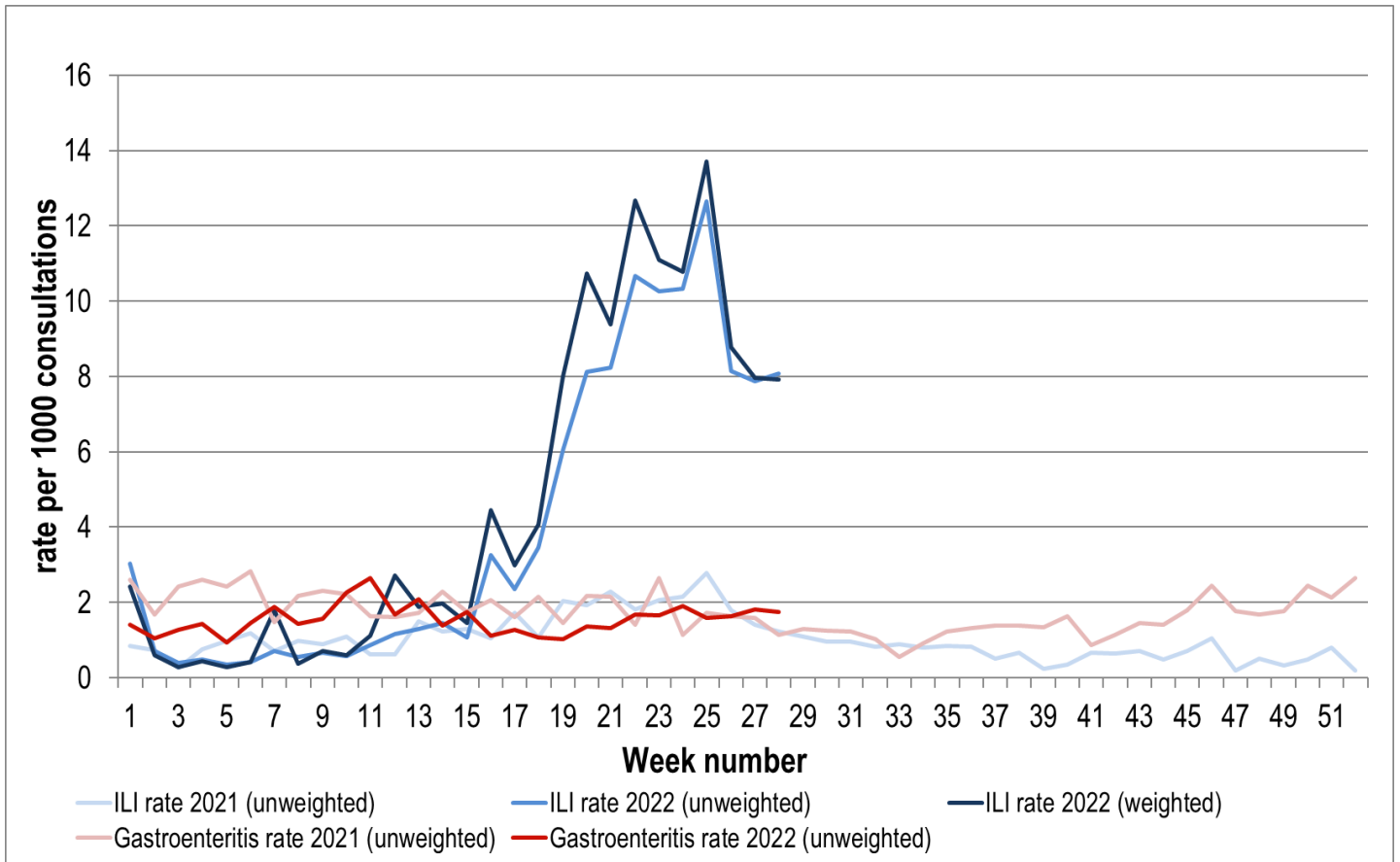


Figure 5. ASPREN + VicSPIN ILI and ASPREN gastroenteritis rates 2021-22. Weighted rates are weighted to account for population size differences between jurisdictions, using population estimates from the 2011 Australian Census.

VIROLOGICAL SURVEILLANCE

28% of all ILI patients were swab tested during weeks 27 and 28 (see Figure 6).

11 cases of Influenza A and 9 cases of SARS-CoV-2 were detected during this period. There were 6 cases of Rhinovirus detected making it the third most common respiratory virus circulating the nation at present (see figure 8).

Viral laboratory data are provided by SA Pathology and VicSPIN laboratories.

	Reporting Period 4 July - 17 July 2022	YTD 1 Jan - 17 July 2022
Total number of ILI notifications	253	1838
Number of swab tests performed	72	535
% ILI patients tested	28%	29%
% of swab tests positive for influenza	15%	28%

Figure 6. ASPREN + VicSPIN virological surveillance results overview for 2022 #

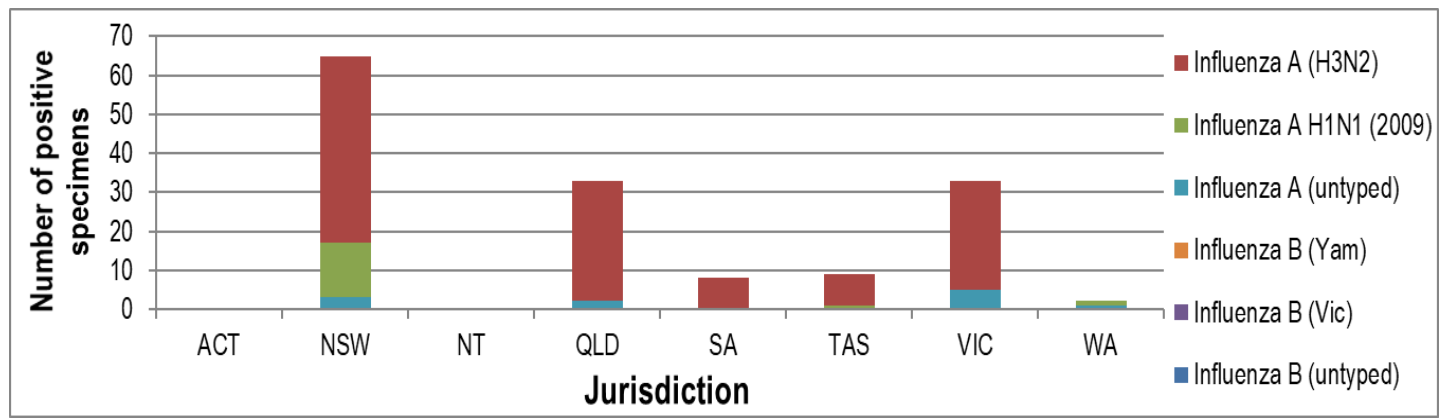


Figure 7. ASPREN + VicSPIN influenza subtype analysis by jurisdiction for 2022 #

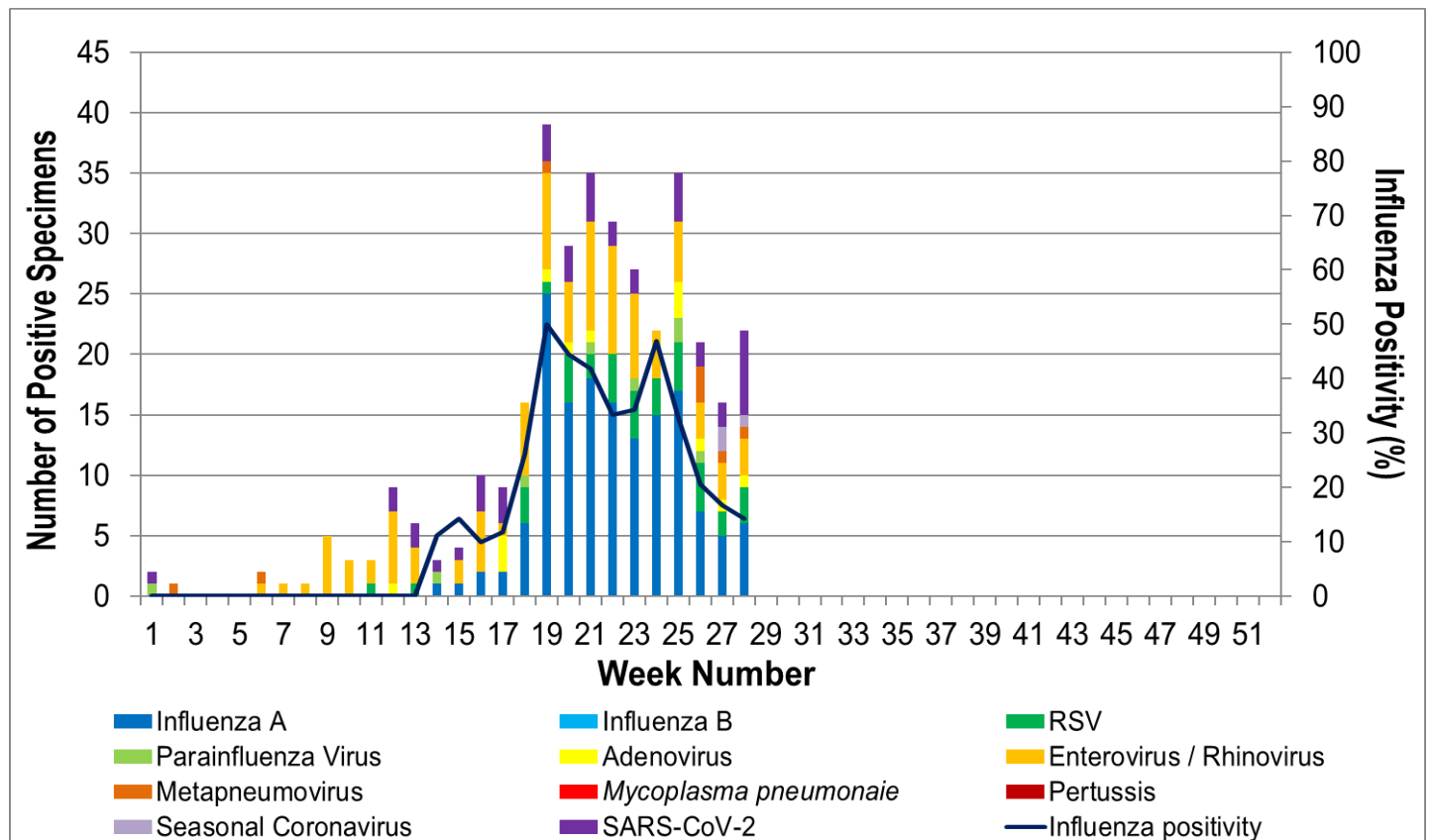


Figure 8. ASPREN, VicSPIN laboratory detection of influenza and other respiratory viruses for 2022 #

The Australian Sentinel Practices Research Network is supported by the Australian Government Department of Health (the Department). The opinions expressed in this paper are those of the authors, and do not necessarily represent the views of the Department.

Please note: This report is based on data available as at 28 July 2022. Delays in the reporting of data may cause data to change retrospectively.