

**NATIONAL PRIMARY CARE INFECTIOUS DISEASES
SENTINEL SURVEILLANCE FORTNIGHTLY REPORT**

Combining data from The Australian Sentinel Practices Research Network (ASPREN)*
and the Victorian Sentinel Practitioners Influenza Network (VicSPIN)*

No. 12, 2021 - 7th June — 20th June 2021

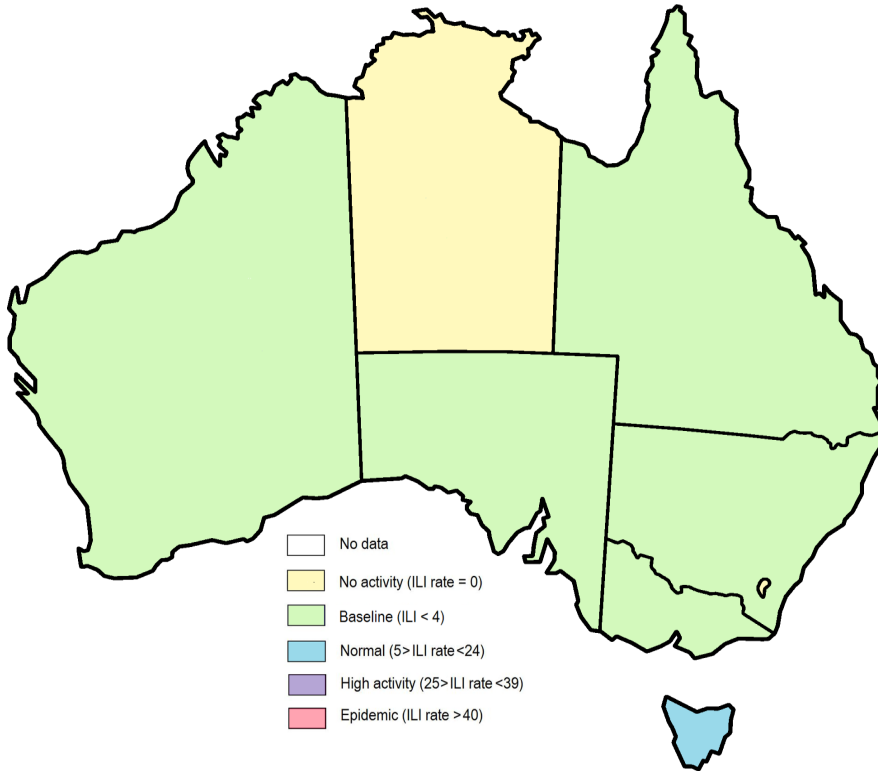


Figure 1. Map of ILI activity by jurisdiction, weeks 23 - 24, 2021.

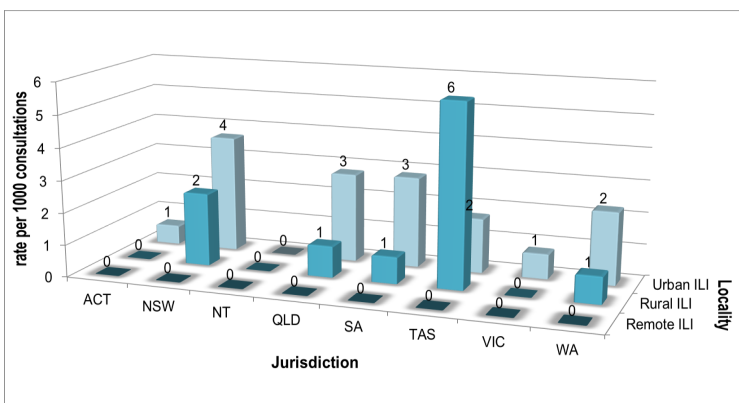


Figure 2. ASPREN + VicSPIN rate of ILI by locality and jurisdiction, weeks 23 - 24, 2021.

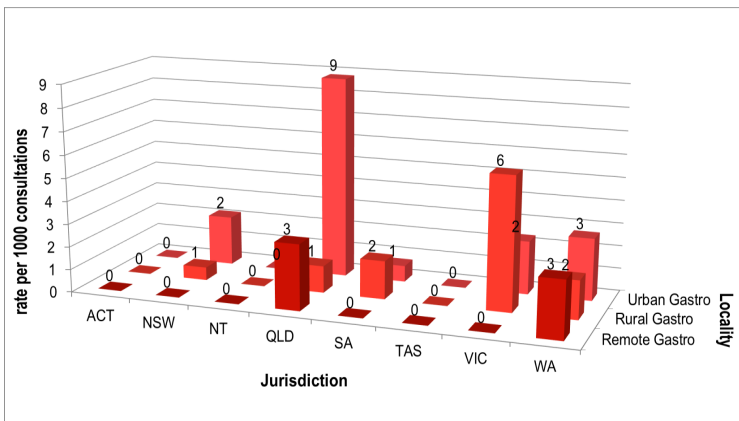




Figure 3. ASPREN rate of gastroenteritis by locality and jurisdiction, weeks 23 - 24, 2021.

NATIONAL SUMMARY

-  Influenza-like-illness levels remain steady below baseline levels
- 0** Case of influenza have been detected in this reporting period
0 x Influenza A
0 x Influenza B
- 0%** Influenza positivity during the reporting period.
- 0** Cases of influenza have been detected this year:
0 x Influenza A
0 x Influenza B
-  Gastroenteritis levels remain steady below baseline levels

**SYNDROMIC SURVEILLANCE
REPORTING**

Reports were received from 246 reporters from 8 states and territories during the reporting period. During weeks 23 and 24 reporters saw a total of 43,811 patients.

INFLUENZA-LIKE-ILLNESS (ILI)

Nationally, ILI notifications slightly decreased during the period with 93 notifications being reported in weeks 23—24. ILI rates reported in this period remained steady at 2 cases per 1000 consultations (weighted). This was similar to the previous fortnight where rates were 2 cases per 1000 consultations in weeks 21 and 22. For the same reporting period in 2020, ILI rates were similar at 2 cases per 1000 consultations for weeks 23 and 24 (see Fig. 5).

GASTROENTERITIS

Nationally, gastroenteritis notifications remained steady over the period with 79 notifications reported. Gastroenteritis rates reported in this period slightly increased to 3 and 1 cases per 1000 consultations in both weeks 23 and 24 respectively, compared to 2 and 1 cases per 1000 consultations in weeks 21 and 22 respectively (see Fig. 5).

* ASPREN is funded by the Commonwealth's Department of Health, Office of Health Protection, Vaccine Preventable Disease Surveillance Section.

* VicSPIN is funded by Melbourne Health and the Victorian Infectious Diseases Reference Laboratory.

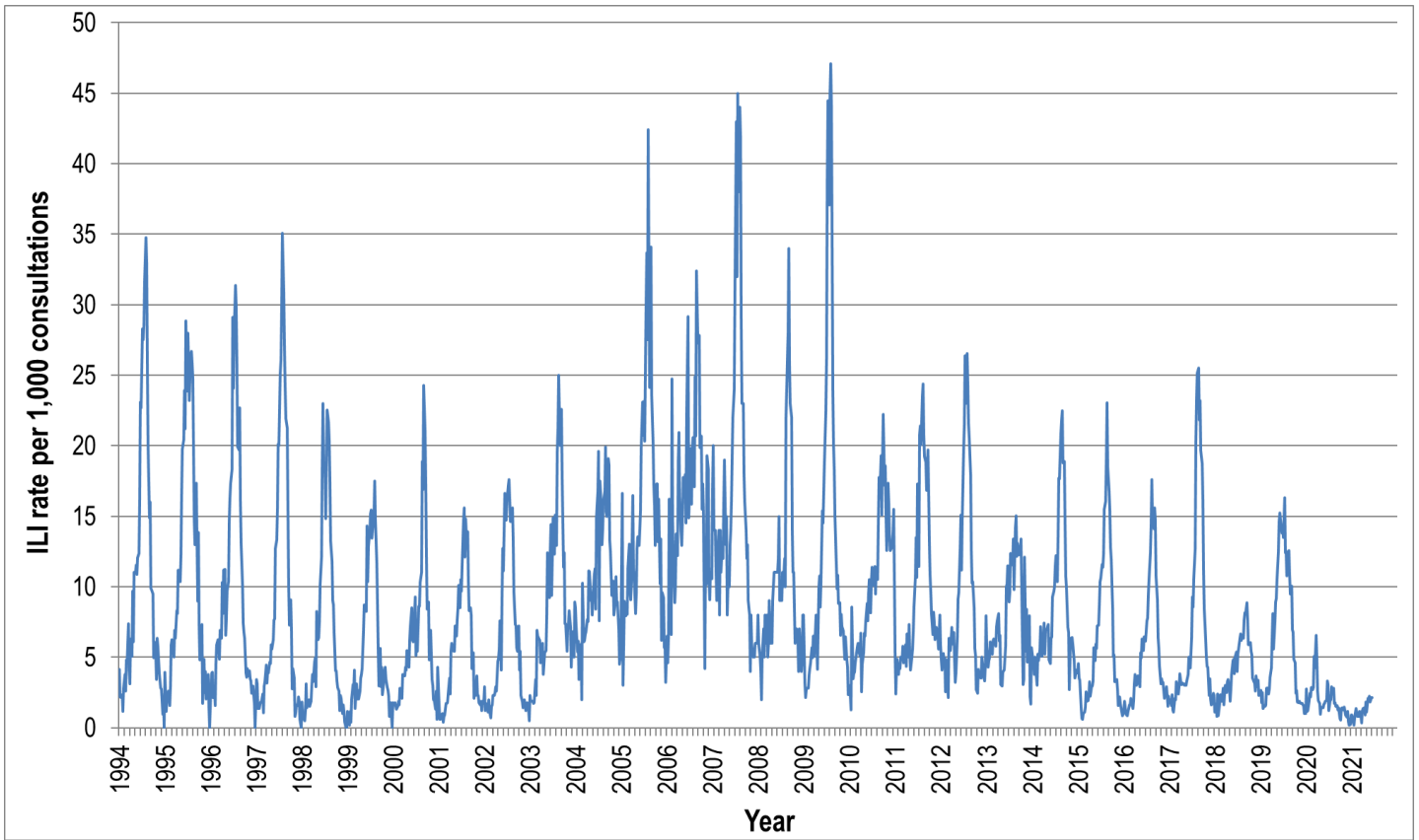


Figure 4. ASPREN ILI rates 1994 - 2021.

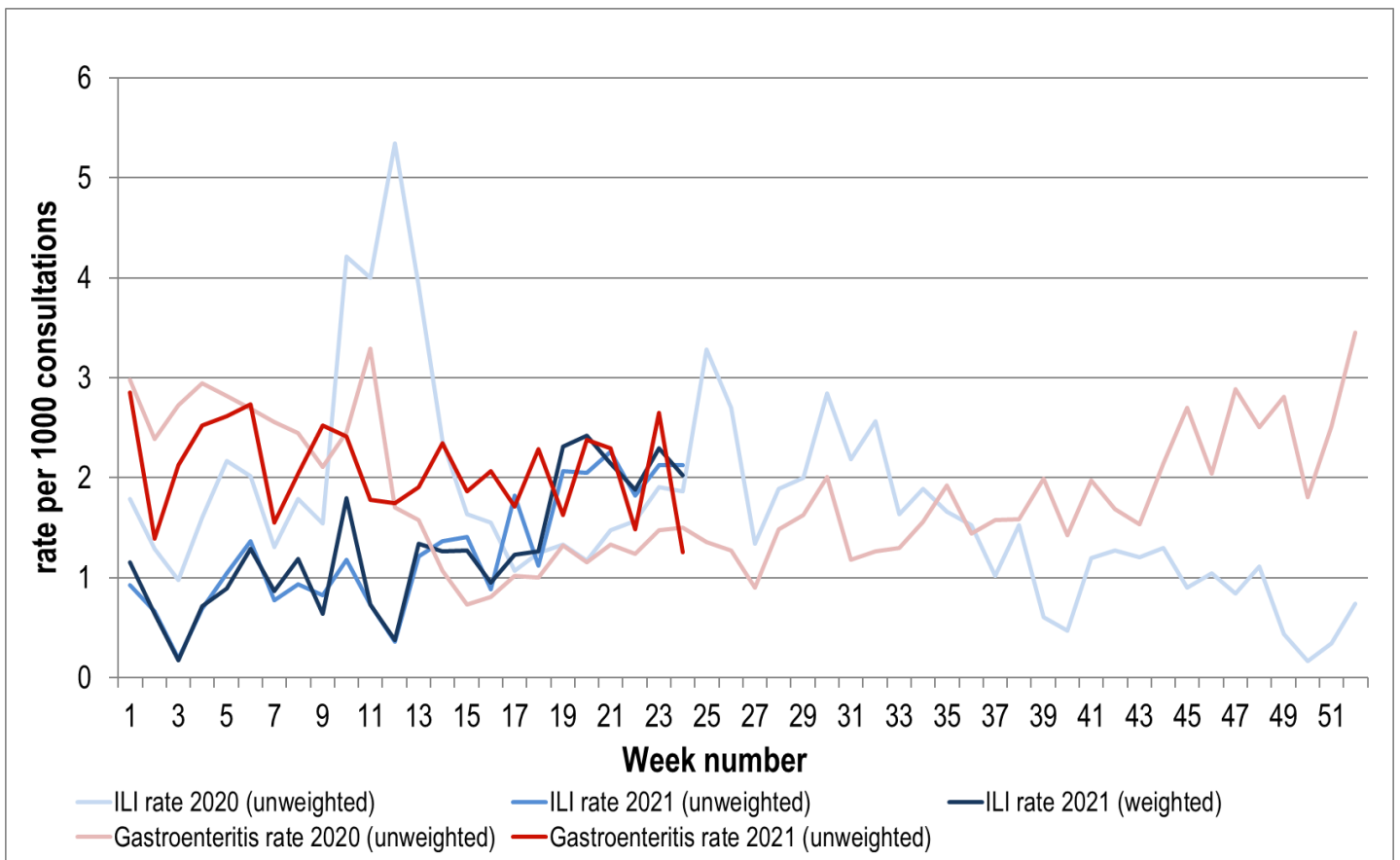


Figure 5. ASPREN + VicSPIN ILI and ASPREN gastroenteritis rates 2020-21. Weighted rates are weighted to account for population size differences between jurisdictions, using population estimates from the 2011 Australian Census.

VIROLOGICAL SURVEILLANCE

49% of all ILI patients were swab tested during weeks 23 and 24 (see Figure 6).

No cases of Influenza were detected during this period. There were 11 cases of Rhinovirus detected making it the most common respiratory virus circulating the nation at present (see figure 8).

Viral laboratory data are provided by SA Pathology and VicSPIN laboratories.

	Reporting Period 07 June - 20 June 2021	YTD 01 Jan - 20 June 2021
Total number of ILI notifications	93	588
Number of swab tests performed	46	256
% ILI patients tested	49%	44%
% of swab tests positive for influenza	0%	0%

Figure 6. ASPREN + VicSPIN virological surveillance results overview for 2021 #

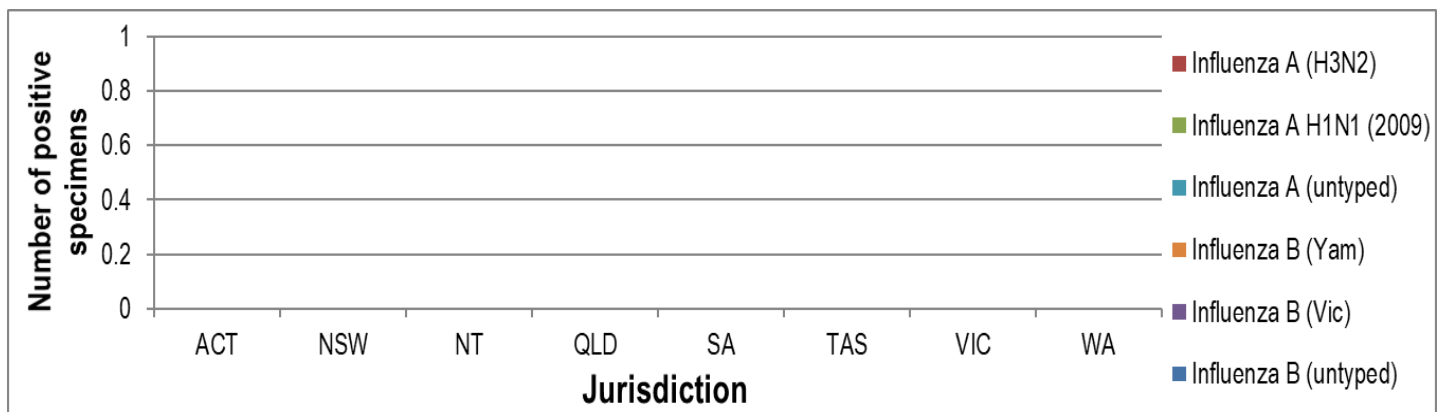


Figure 7. ASPREN + VicSPIN influenza subtype analysis by jurisdiction for 2021 #

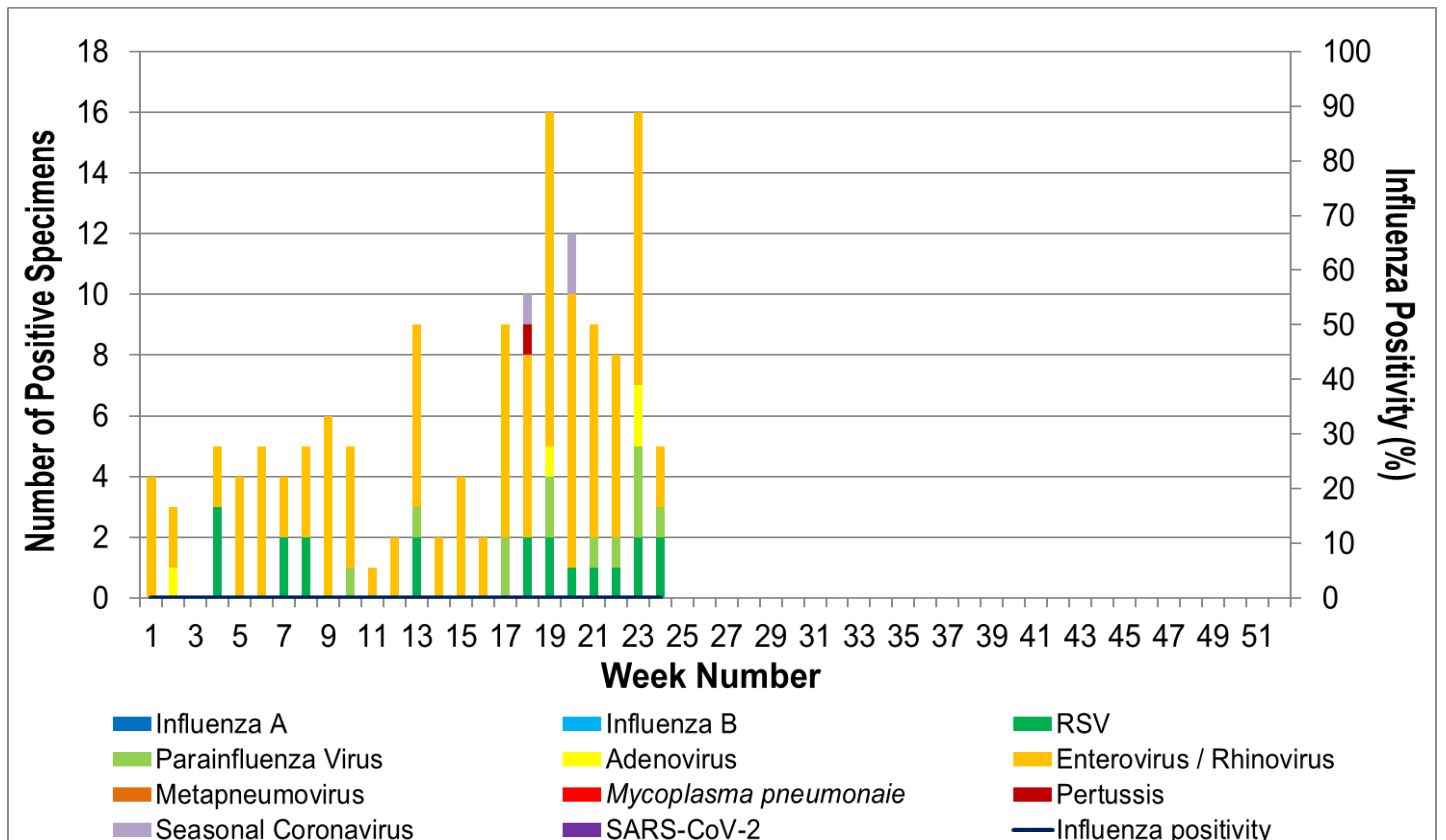


Figure 8. ASPREN, VicSPIN laboratory detection of influenza and other respiratory viruses for 2021 #

The Australian Sentinel Practices Research Network is supported by the Australian Government Department of Health (the Department). The opinions expressed in this paper are those of the authors, and do not necessarily represent the views of the Department.

Please note: This report is based on data available as at 1 July 2021. Delays in the reporting of data may cause data to change retrospectively.